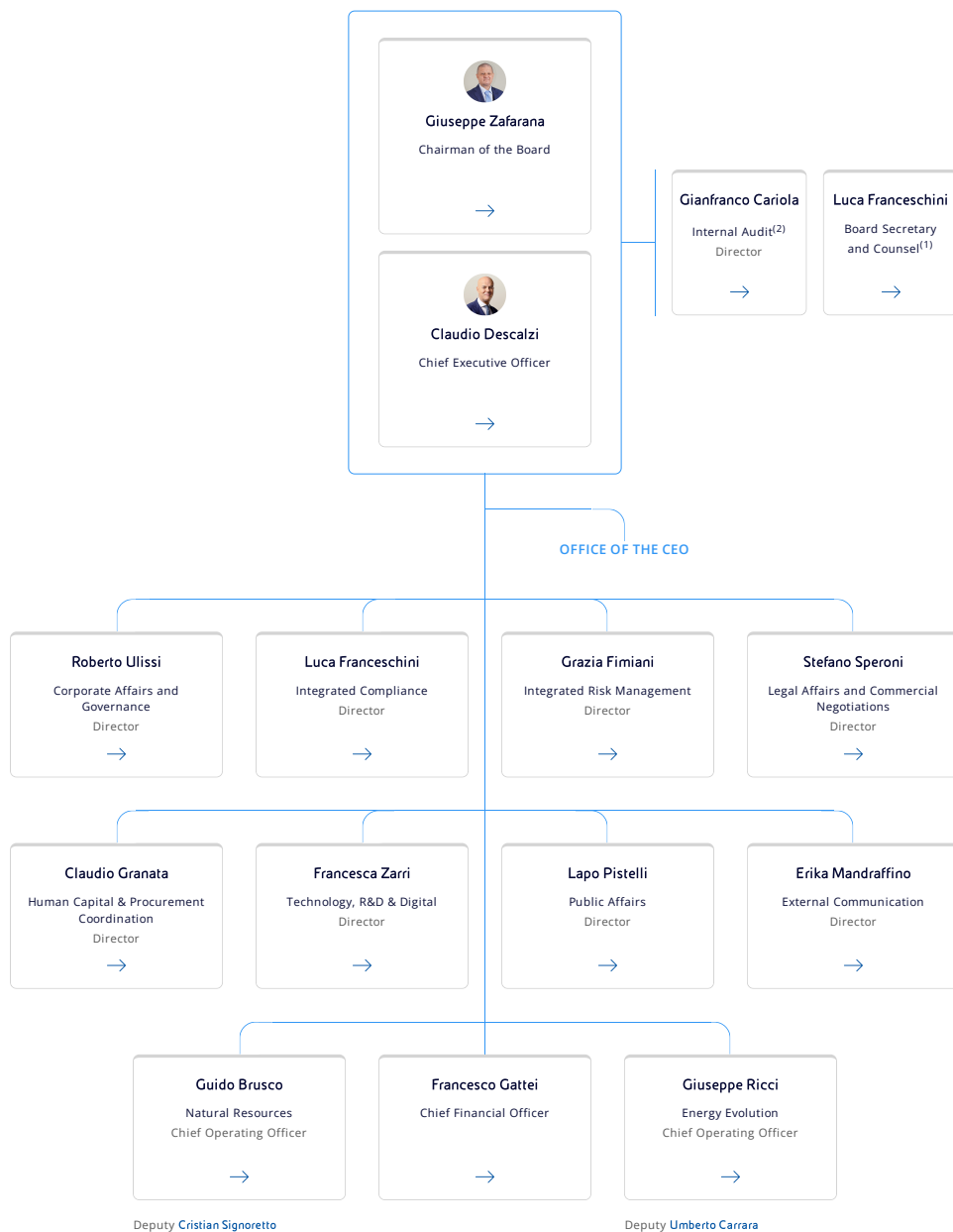


Board of Directors ⁽³⁾



(1) The Board Secretary and Counsel reports hierarchically and operationally to the Board and, by means of it, to the Chairman.

(2) he Head of Internal Audit Department reports hierarchically to the Board and, on its behalf, to the Chairman, without prejudice to its operational dependence on the Control and Risk Committee and on the Chief Executive Officer, who is in charge of establishing and maintaining the internal control and risk management system.

(3) The list of the numbers of the Board of Director can be found in the page "Governance".